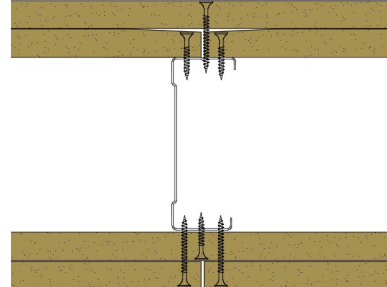


## 92-B-58 - SPEEDLINE System Data Sheet - Version V1 (24-10-23)

SPEEDLINE 92mm 'C' Stud Partition @600mm Ctrs,  
with 2x BG Gyproc 15mm WallBoard each side



### System Performance Breakdown

Fire Resistance:

BS476 Part 22:1987:

Test Ref & Date or Applied Ref & Report:

Max Height:

Thickness:

Duty Grade: BS 5234: Part 2:1992:

Sound Insulation:

**60/60 Minutes** (Integrity/Insulation).

**BTC 13282F - BRE Report P102396-1011A**

**Refer to Speedline Specification Clause**

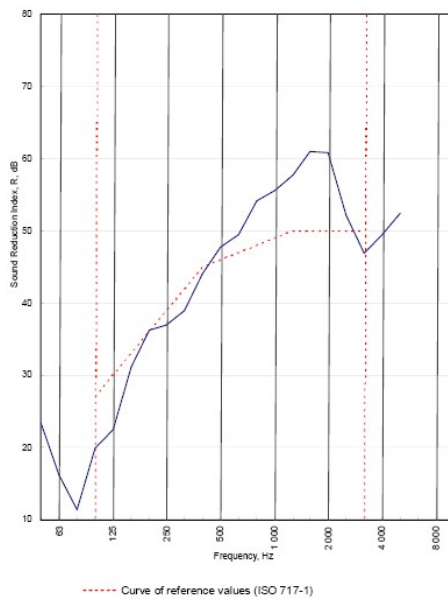
**154 mm.** (At Base Track, Excluding Finishes)

**Severe - Annexes A-F**

**46  $R_w$ dB**, Date Tested or Assessed Against - 70-B-57

Test Code:  
H17486AA  
Test Date:  
14/07/2011

Freq. Hz	R dB
50	23.4
63	16.2
80	11.4
100	19.9
125	22.4
160	31.1
200	36.2
250	36.9
315	39.0
400	44.0
500	47.7
630	49.5
800	54.2
1 000	55.6
1 250	57.7
1 600	61.0
2 000	60.9
2 500	52.1
3 150	46.9
4 000	49.4
5 000	52.4
6 300	
8 000	
10 000	



Rating according to BS EN ISO 717-1:1997  **$R_w$  (C;Ctr) = 46 (-3;-9) dB**  
 Max dev. 7.6 dB at 125 Hz  
 Evaluation based on laboratory measurement results obtained by an engineering method:  
 $C_{50-3150}$  = -5 dB     $C_{50-5000}$  = -5 dB     $C_{100-5000}$  = -2 dB  
 $C_{50-3150}$  = -16 dB     $C_{50-5000}$  = -16 dB     $C_{50-100-5000}$  = -9 dB

TESTED AT ONE OF THE UKAS ACCREDITED LABORATORIES BELOW

- B.T.C (H-Ref on Graph)
- B.R.E
- AIRO
- S.R.L
- 

Customer: Metsec plc Hepsac Division



BTC 17486A: Page 8 of 10

SPEEDLINE Drywall Systems, Adsetts House, 16 Europa View, Sheffield Business Park, Sheffield, S9 1XH.

Tel: 0114 231 8030.

Email: [enquiries@speedlinedrywall.co.uk](mailto:enquiries@speedlinedrywall.co.uk)

(As per the requirements set out in ISO/IEC 17025:2017 regarding test data the results stated have been carried out by voestalpine Metsec plc as part of the contract to supply Speedline Metal Sections to SIG Plc)